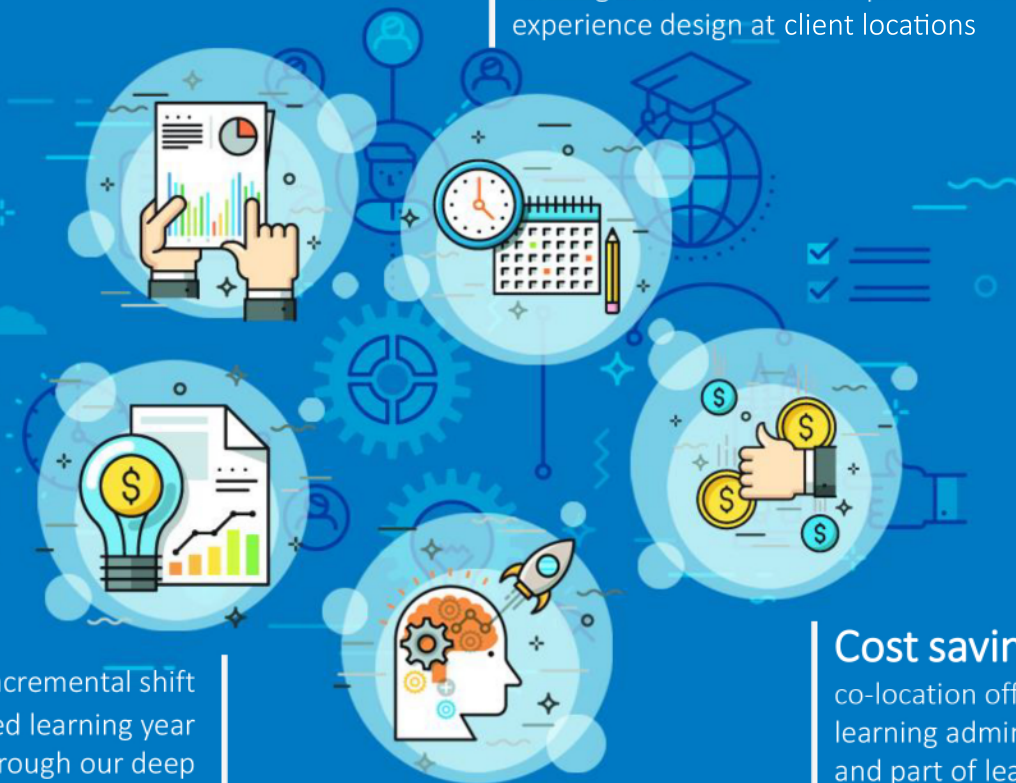




Upfront productivity of **7%** and overall productivity of **22%** over 5 years by optimizing the current state of operations

**Smooth transition** through co-location of **project management**, training coordination and a part of learning experience design at client locations



**~10%** incremental shift towards flipped learning year on year through our deep experience in optimizing learning delivery mix

**Cost savings** through co-location offshoring learning administration and part of learning experience design

Cost reduction, standardization of process and consolidation of technology through **digital initiatives**

- 15% - 20% reduction in project management overheads through Learning Development Lifecycle Management Tool
- Predictive Learning
- K Bots



Upfront productivity of **7%** and overall productivity of **22%** over 5 years by optimizing the current state of operations



### Smooth transition

through co-location of **project management**, training coordination and a part of learning experience design at client locations

### Cost savings

through co-location offshoring learning administration and part of learning experience design

**~10%** incremental shift towards flipped learning year on year through our deep experience in optimizing learning delivery mix

Cost reduction, standardization of process and consolidation of technology through **digital initiatives**

- 15% - 20% reduction in project management overheads through Learning Development Lifecycle Management Tool
- Predictive Learning
- K Bots

# Summary



## Customer Details



Hospital:

**ABC**



Imaging Equipment:

**MRI Scanner**



Power Quality Evaluation :

**415UCBHR3**



Timeline for Evaluation:

**Past 24 months**



## Power Quality Findings



Voltage sags and brownouts appear to be **intermittent** with no real pattern of seasonal issues



**Three** complete outages of < 15 seconds duration



## System Productivity



Downtime due to onsite repairs:

**147.42** hours



Scan days lost in last 24 months:

**12.3** scan days



Revenue lost in last 24 months:

**\$552,825**



## Cost Effective Solution



200A **Dynamic SAG**

**Corrector** without GT option



Catalog ID – **E4502FB** &  
**E4504CG**

### Benefits

- Extremely low output voltage distortion for non-linear and 100% step loads reducing the need for oversizing the UPS.
- 12-month warranty with 24X7 service hotline for UPS and Battery System including parts and labor.
- Ten-year prorated warranty on batteries
- Automatic start-up procedure and a user-friendly interface



## Summary

### Customer Details



Hospital:  
**ABC**



Imaging Equipment:  
**MRI Scanner**



Power Quality Evaluation :  
**415UCBHR3**



Timeline for Evaluation:  
**Past 24 months**

Voltage sags and brownouts appear to be



**intermittent** with no real pattern of seasonal issues



Three complete outages of **< 15** seconds duration



### Power Quality Findings



Downtime due to onsite repairs: **147.42** hours



Scan days lost in last 24 months: **12.3** scan days



Revenue last in last 24 months: **\$552,825**

### Potential System Productivity



200A **Dynamic SAG Corrector** without GT option



### Cost Effective Solution