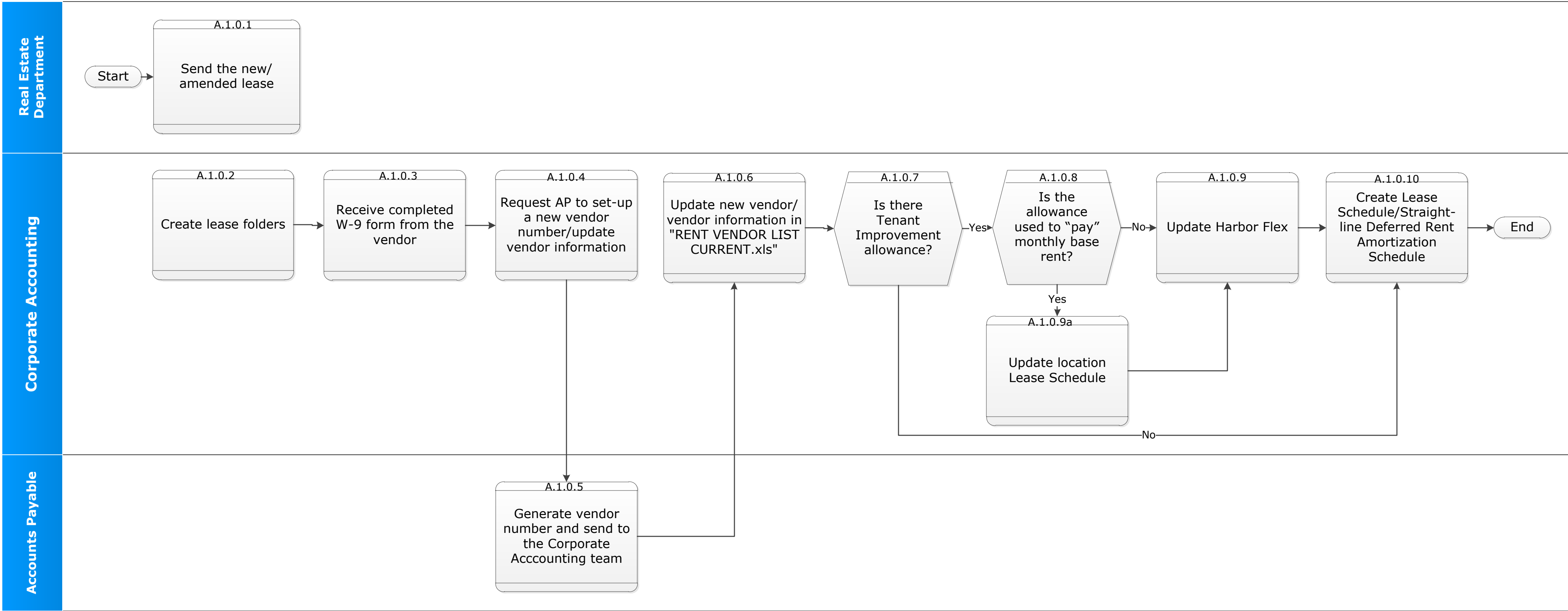


# Enterprise Compliance—Rent 1

Date: October 7, 2015  
Version: V 1  
Owner:

- Notes
- Email
- Phone
- Automatic
- Face to Face
- Manual



Client SPE requests  
paydown to principal

Between Sale  
Determination &  
Sale?

Yes

No

Check GE's Net Balance  
For Participation

Payment > GE's  
Net Balance

Yes

No

**Apply payment**

- 3100 transaction
- Effective date = date of payment
- Customer Cash offset = Default incoming payment instructions

Investor	Spread Amount	Cash offset
Syndicate Members	Default share	Default Outgoing Paymt Instructions
Held-for-Sale	GE's net share	Wash account
Balance-to-Sell	0.00	N/A
QSPE	(Payment amount) - [(Held-for-sale) + (Synd Members)]	Default Outgoing Paymt Instructions

•Post bundle

**Adjust Facility Limits**

- 2320 at QSPE level under facility for the amount spread to QSPE
- 2300 at Held-for-Sale level under facility for the amount spread to QSPE
- Effective date = date of payment
- Post bundle

**Rule -** QSPE limit + Held-for-Sale limit = GE net limit

Payment > GE's Net Balance

Yes

**Apply payment**

- 3100 transaction
- Effective date = date of payment
- Customer Cash offset = Default incoming payment instructions

Investor	Spread Amount	Cash offset
Syndicate Members	Default share	Default Outgoing Paymt Instructions
Held-for-Sale	Held-for-Sale loan balance	Wash account
Balance-to-Sell	Balance-to-Sell loan balance	Wash account
QSPE	(Payment amount) - [(Synd. Members) + (Held-for-sale) + (Balance-to-Sell)]	Default Outgoing Paymt Instructions

- Set up Outlook reminder to reverse Balance-to-Sell payment on day of sale
- Post bundle

**Adjust Facility Limits**

- 2320 at QSPE level under facility for the amount spread to QSPE
- 2300 at Held-for-Sale level under facility for the amount spread to QSPE
- Effective date = date of payment
- Post bundle

**Rule -** QSPE limit + Held-for-Sale limit = GE net limit

No

**Apply payment**

- 3100 transaction
- Effective date = date of payment
- Customer Cash offset = Default incoming payment instructions

Investor	Spread Amount	Cash offset
Syndicate Members	Default share	Default Outgoing Paymt Instructions
Held-for-Sale	(Payment amount) - (Synd Members)	Wash account
Balance-to-Sell	(Payment amount) - [(Synd members) + (Held-for-sale)]	Wash account
QSPE	0.00	N/A

- Set up Outlook reminder to reverse Balance-to-Sell payment on day of sale
- Post bundle

**Apply payment**

- 3100 transaction
- Effective date = date of payment
- Customer cash offset = Default incoming Paymt Instructions

Investor	Spread Amount	Cash offset
Syndicate Members	Default share	Default Outgoing Paymt Instructions
Held-for-Sale	(Payment amount) - (Syndicate members)	Wash account
Balance-to-Sell	0.00	N/A
QSPE	0.00	N/A

•Post bundle

**Recalculate Ownership**

- Loan level
- 3950 transaction
- Effective date = date of payment
- Post bundle

Verify loan balances

Verify facility limits